

Writing About Graphs

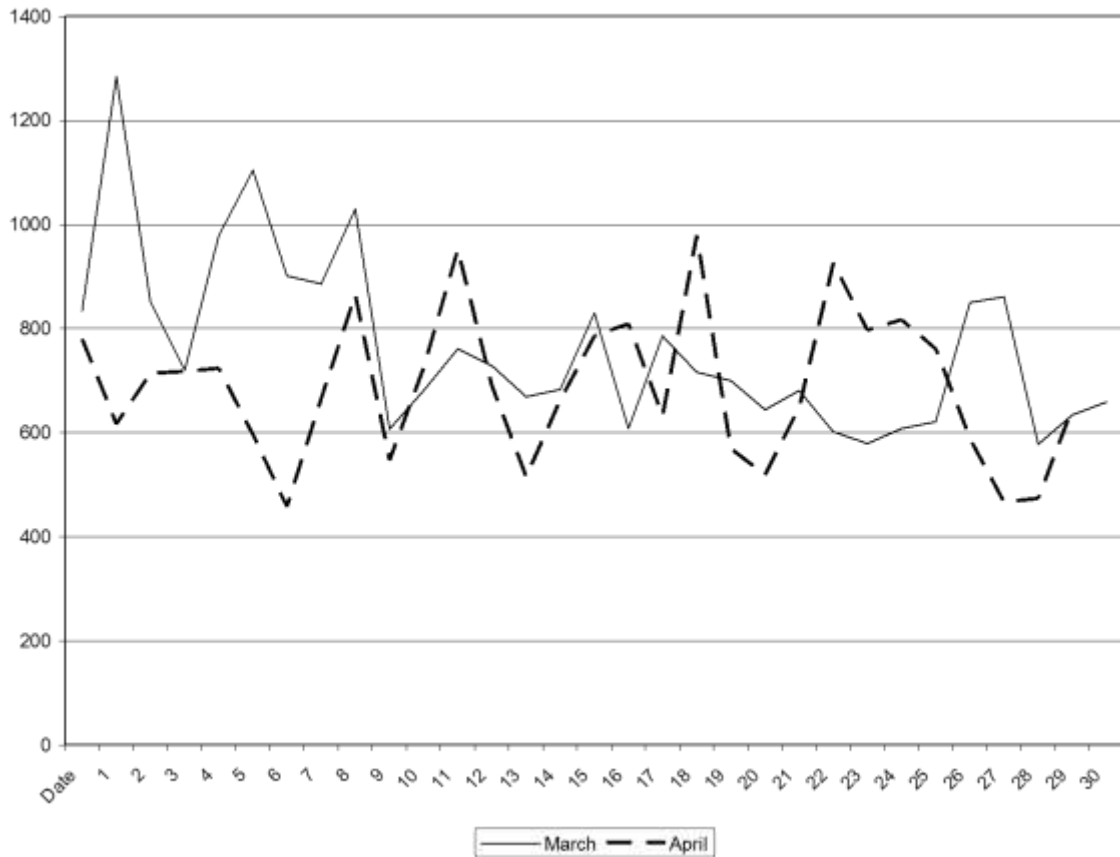
WRITING IELTS TASK 1 EXAMPLE

You should spend about 20 minutes on this task.

The graph below shows the number of page views of popular Website Jamesabela.co.uk in April and March 2007

Summarise the information by selecting and reporting the main features and make comparisons where relevant.

Write at least 150 words.



James Abela ELT

Useful Vocabulary

Verb	Past Simple	Past Participle
to rise	rose (irr)	risen (irr)
to increase	increased	increased
to improve	improved	improved
to fall	fell (irr)	fallen (irr)
to decrease	decreased	decreased
to recover	recovered	recovered

ADJECTIVE	ADVERB	HOW MUCH CHANGE?
slight	slightly	very small
sharp	sharply	sudden, large
dramatic	dramatically	sudden, very large
steady	steadily	regular

Form

April's page views	decreased	slightly	on (the) 21 st
Page views	increased	dramatically	March
<i>Subject</i>	<i>verb (Past Simple)</i>	<i>adverb</i>	<i>object</i>

(...) – Spoken only

Guided Writing

The following guide gives you an idea of the amount you are expected to write and an idea of suggested timings for writing this kind of task.

Task	Approach	Time Used	Time left	Task
Start exam		0	20	0
Read Question	Read question carefully	5	15	5
Introduction	Rewrite the question in your own formal words	7	13	2
Write Body	<ul style="list-style-type: none"> • Highest overall page views • Compare the first third of the month • The three April peaks • 22nd - 26th April page views are higher than March • Late plateau in March 	16	4	9
Conclusion	<ul style="list-style-type: none"> • A lot of fluctuation, but generally between 600 to 800 page views per day. • Why do you think this might be? 	18	2	2
Grammar Check		20	0	2

James Abela ELT

Sample Answer

The graph shows the page views for jamesabela.co.uk in 2007 for the months of March and April.

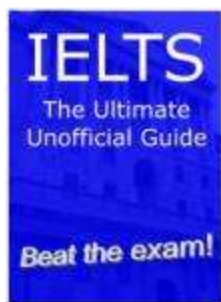
The highest peak is on 2nd March when page views reach nearly 1300 and the lowest number of page views is on 6th April when there are just over 400 views. In the first third of the month March's figures are considerably higher than April's, but the two figures become much closer for two days on the 8th and then April figures reach their first peak. Both sets of figures continue to fluctuate until the 18th when March's figures begin a steady decline, while April's figures sky-rocket, crash and climb steeply again. On the 23rd April's figures reach their final peak, which March's figures reach a plateau on the 28th. Interestingly on the 30th they meet again.

Overall this graph shows wild fluctuations, but generally within the 800 to 600 views range.

(149 words)

Teaching Ideas

1. One useful technique to introduce some fun to the class, is to split students into pairs and get them to sit back-to-back. Then give one student the graph and get the other student to draw the graph based on what they hear.
2. The Useful vocabulary is just a start to ensure that they have some words to use, but try to elicit more to make their text look more interesting and gain more points for use of vocabulary.
3. After students have written their answers get them to compare the vocabulary used so that students can extract any fresh vocabulary and ideas from each other.
4. Depending on ability give the guided answer and/or vocabulary.



IELTS The Ultimate Unofficial Guide

It gives us great pleasure to offer the very first IELTS Guide for the Kindle. It is for the **ACADEMIC** exam and **NOT** the general test. I have trained more than 1000 students and another 30,000 have downloaded materials from my Website to pass the IELTS exam and what started as a few notes for my students has ended up as a complete guide. I maybe the author, but my students have spent years telling me, what they need to know and what I need to do to make sure that they get past the test! [Get It Here>>](#)